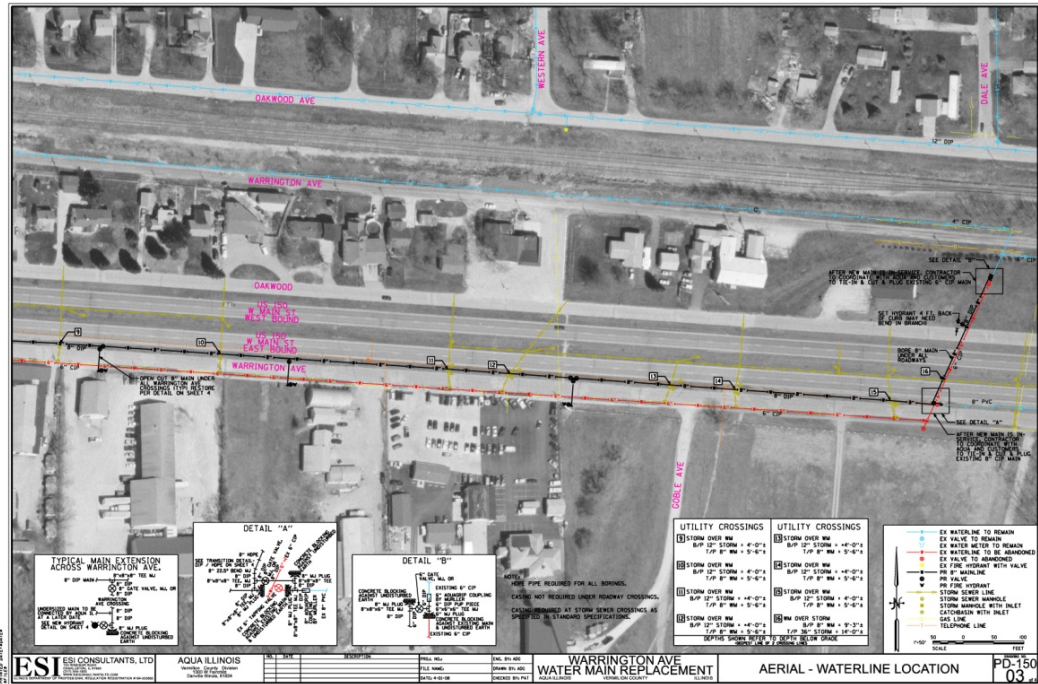


WATER MAIN REPLACEMENT PROJECTS
DANVILLE, HILLERY, PHILO AND TILTON, ILLINOIS



ESI Consultants, Ltd. developed an overall plan for replacing outdated 2", 4", 6" and 8" cast iron water main with the combination of 6", 8" or 12" ductile iron and HDPE water main. A total of 45,300' (8.6 miles) of new water main was placed along various state and local streets in and around Danville, Hillery, Philo and Tilton, Illinois over a five-year period. The projects included boring and directional drilling to cross State routes and reduce restoration of residential areas. Water mains were sized to provide fire protection to areas that previously had none. A methodology to construct the new lines and maintain water service to the users with minimal disruption was followed. Permits from IEPA, IDOT, and IHPA were obtained for these projects.

Services Provided:

- IEPA Permit Application Development & Submittal
- IDOT Permit Application Development & Submittal
- IHPA Permit Application Development & Submittal
- Prepared Plans for Bidding and Construction
- Developed Opinion of Construction Costs

This project reflects Firm and Staff experience.

