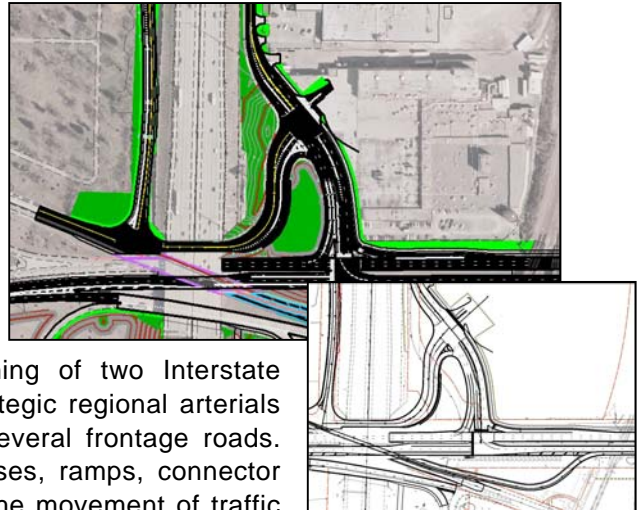


**NORTH AVENUE / LAKE STREET / NORTHWEST AVENUE / COUNTY  
LINE ROAD / I-294 / I-290  
NORTHLAKE/ELMHURST, ILLINOIS**

The Award Winning project included development of Phase 2 plans specifications and cost estimates for this federally funded project (CMAQ) that included over 5 miles of local roadway work as well as the addition of a new exit ramp from southbound I-294.

The existing I-294/I-290/Illinois Route 64 interchange is a complex intertwining of two Interstate expressways (I-294 and I-290), two strategic regional arterials (IL Route 64 and US Route 20) and several frontage roads. There are numerous bridges, underpasses, ramps, connector roads, and traffic signals that facilitate the movement of traffic along and between the various routes. Critical issues include local agency and key business coordination, land acquisition support, coordination between IDOT, ISTHA, Cook County and DuPage County as well as Northlake and Elmhurst. Major design issues included significant drainage improvements to address severe localized flooding, staging for multiple structures, access control modifications and overall maintenance of traffic for this highly congested corridor.



**Services Provided:**

- Traffic Data Collection
- Origin-Destination Study
- Regional Modeling
- Operational Analysis of the surrounding interchanges.
- Crash Analysis Reports
- Geometric Studies/Design Alternatives
- Intersection Design Studies
- Traffic Signal Design
- Final Engineering Plans, Specifications & Construction Cost Estimates

This project reflects Firm  
and Staff experience.



Excellence, Service, Integrity  
www.esild.com