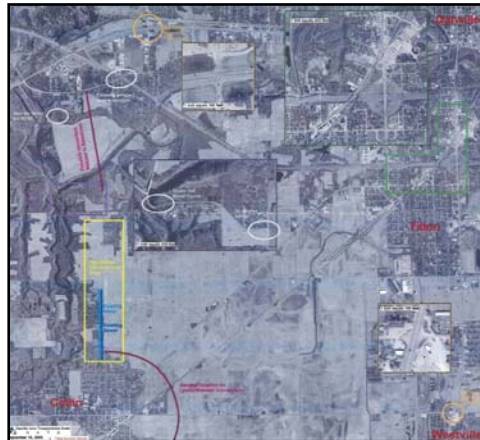


**CATLIN ALTERNATIVE CORRIDOR FEASIBILITY STUDY,
CATLIN/DANVILLE, ILLINOIS**



This study used an Origin-Destination Study to evaluate the traffic patterns and needs of the south west portion of Vermilion County. One major issue was the high volume rail line that cuts diagonally through the Catlin area causing disruption to the flow of traffic in and out of the City of Danville. The collected data was used to determine what areas of Danville the public was trying to reach. Desire Line Maps were then developed to show what the most traveled routes were and where it was most feasible to improve existing routes, provide Railroad Bypass routes, and overpasses and/or provide new routes in and out of Danville. This project also looked at improving local street connectivity, what improvements would enhance land use development, prioritizing improvements and infrastructure expansion and cost analysis for the improvements.

Services Provided:

- Feasibility Planning Study
- Origin – Destination Study
- Data Collection
- Cost Estimating
- Public Meeting and Focus Group Meetings

This project reflects Firm
and Staff experience.



Excellence, Service, Integrity
www.esild.com