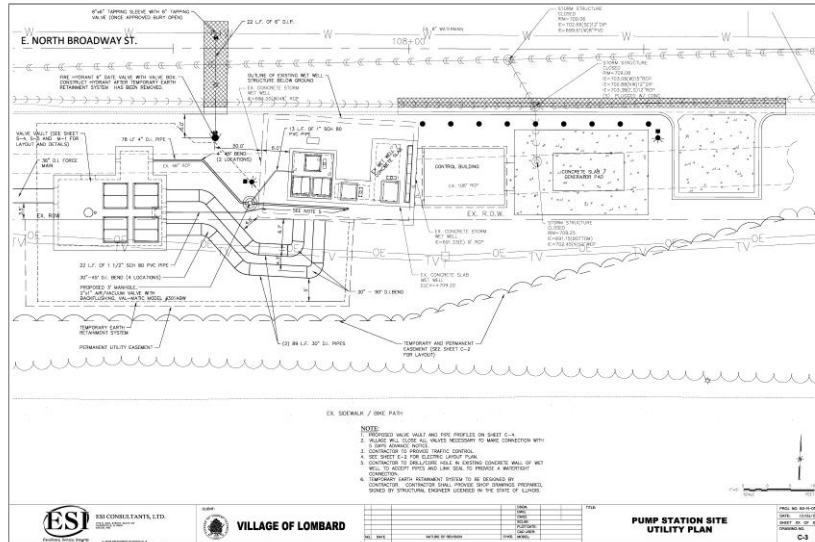


**N. BROADWAY INTERIM PUMP STATION AND FORCE MAIN  
LOMBARD, ILLINOIS**



The Village of Lombard has been progressing toward separating their combined sewers for several years. As a part of this effort, the Village had constructed a wet well and trunk line for the Gatz Pond watershed area. This project included the design of a 13,000 gpm interim storm water pump station, using the previously constructed wet well, and 30” force main to handle up to the 10 yr storm event overflows. The design included sizing of the pumps, rehabilitation of the existing wet well, generator and a control building to house the electrical equipment, SCADA controls and transfer switches for the emergency generator. The building work included foundation design, modification of a precast modular building with electrical, heating and ventilation and the addition of a membrane roof.

The wet well included two 8,000 gpm axial pumps and a 300 gpm dewatering pump to lower the water level in the wet well after storms. All pumps are controlled with variable frequency drives for better control.

This project was unique as the pump station was controlled by a level sensor 2,500 feet downstream in an existing manhole in the existing storm sewer system.

**Services Provided:**

- Design of Pump System and Controls
- Architectural, Structural, Mechanical and Electrical design
- Permit for DuPage County and Village of Lombard

This project reflects Firm and Staff experience.

