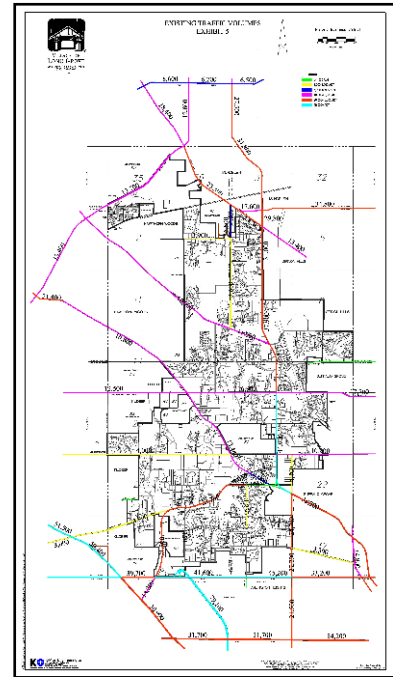
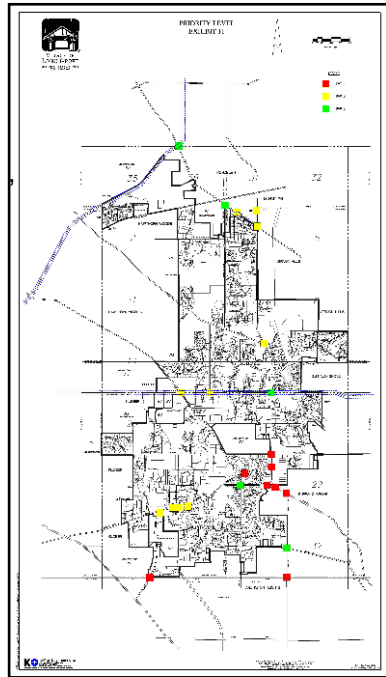


VILLAGE WIDE TRAFFIC STUDY LONG GROVE, ILLINOIS



The purpose of the Village Wide Traffic Study was to look at traffic concerns throughout the Village and in selected critical locations. These concerns include, but were not limited to, cut through vehicles, congestion, and intersection safety. The traffic study included data collection analysis, community involvement, and report preparation. This study required coordination with Lake County and the Illinois Department of Transportation to develop solutions that would promote safety, increase capacity and the flow of traffic throughout the Village, while maintaining a safe and efficient transportation and pedestrian-friendly system. Key project issues included traffic calming studies, modern roundabout evaluations, signal warrant analysis, capacity analysis, regional traffic studies, and community traffic studies.

Services Provided:

- Regional and Community Traffic Studies
- Modern Roundabout analysis
- Safety Studies
- Signal Warrant Analysis
- Intersection Capacity Analysis
- Network Analysis
- Community Involvement
- Report Preparation

This project reflects Firm
and Staff experience.



Excellence, Service, Integrity
www.esild.com