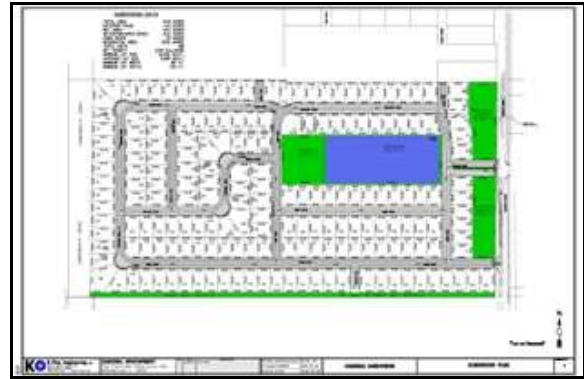


**WELLINGTON ESTATES SUBDIVISION DEVELOPMENT  
LYNWOOD, ILLINOIS**



Engineering, zoning and entitlement services were provided for the Wellington Estates development of a new 186-unit single family residential subdivision on a 75 acre site. Site improvements included storm water management facilities, sanitary sewer, water main, storm sewer, roadways, detailed site grading, and soil erosion and sedimentation control measures. Additional off-site improvements included installation of storm sewer, water main and sanitary sewer and roadway improvements including right and left turn lanes along Torrence Avenue in Lynwood, Illinois. Coordination with the Village of Lynwood, the Illinois Department of Transportation and other agencies for the necessary permits was also included in the project.

**Service Provided:**

- Performed topographic survey and prepared topographic mapping including existing utilities
- Prepared Plats
- Provided wetland delineation
- Provided a Preliminary Geotechnical Investigation report
- Prepared Preliminary and Final Plat of Subdivision
- Prepared Preliminary and Final Site Engineering Plans and the appropriate construction documents
- Provided drainage, floodplain & storm water services including preparation of required permits

This project reflects Firm  
and Staff experience.



Excellence, Service, Integrity  
www.esiltd.com