

Services

Transportation Engineering
Municipal Engineering
Water/Wastewater Engineering
Structural Engineering
Construction Engineering
Civil/Site Engineering
Natural Resources
Paths, Parks & Recreational

ESI Mission Statement:

At a recent company retreat we reviewed and updated our mission statement. It was a great discussion and highlighted our similar goals. There was consensus that we wanted "**community support**" to be included as part of our Mission Statement. ESI strives to support the communities where we work and do business. Whether it is working with the community school system STEP (Secondary Transition Experience Program) coordinators to employ persons with special needs and disabilities, sponsoring community teen outreach for drug and alcohol prevention, or getting involved with other local community events, we specifically look to humbly participate in local philanthropy and make the communities where we work a better place.

Principal Highlight:

Getting to know ESI Consultants.... **Anthony Malone** and **Dave Clark** are two of our company Principals. Tony Malone joined us in 2004 bringing his broad range of knowledge in civil engineering, specifically utilities, municipal and site engineering. Dave Clark joined us shortly after Tony in early 2005. Dave was with the Illinois Dept of Transportation for 28 years including serving as District Engineer for the last four of those. Dave has a broad range of knowledge in transportation, especially construction. Both have proven their integrity and commitment to excellence and service over the years.

Excellence, Service, Integrity

ESI welcomes Laura Anderson and James Sullivan, P.E. to our team!

ESI announces a new office opening in Elizabeth, Illinois.

Naperville
1979 North Mill Street
Suite 100
Naperville, Illinois 60563
phone 630.420.1700

Chicago
200 South Wacker Drive
Suite 3100
Chicago, Illinois 60606
phone 312.277.1700

Charleston
753 Windsor Road
Charleston, Illinois 61920
phone 217.348.1900

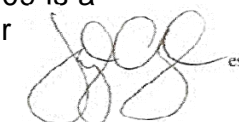
Elizabeth
202 E. Myrtle, P.O. Box 156
Elizabeth, Illinois 61028
phone 815.858.2126

A Message from Joe...

It seemed so backwards when I first read it many years ago. In the undergraduate library at the entrance was a cultural display about China. "May you have the misfortune of living during exciting times" read the quote only attributed to "an ancient Chinese proverb." Some 29 years later, I think I understand this more and more. Reading the headlines of the newspapers (or internet service), each day brings some new "exciting" news. I would rather enjoy a calm, steady growth in the economy. Despite the challenges that we all face, or perhaps because of those challenges, it is even more important to focus on our core values of **Excellence, Service and Integrity**. As I was driving between meetings

recently, I heard this on one of my favorite radio stations (paraphrasing), "Why we do what we do becomes even more important when we are challenged." The values and standards that we live by define who we are regardless of the times - good or bad. We will continue to try our best to live by those high standards regardless of our level of financial gains because we truly believe that in the long run that is what defines our success.

We hope that your economic outlook is getting better every day and that 2009 is a prosperous year for you.



What's New...



The beginning of 2009 was heralded by some new accolades for ESI Consultants. This includes awards from the Illinois Road & Transportation Builders for the Jackson Drive Bridge ~ Chicago Dept. of Transportation Project of the Year and First Street Redevelopment-Contract 1, St. Charles awards: 2009 ACEC Merit Award for Excellence and 2009 Chicago Metro Chapter APWA ~ Project of the Year Award for Environment: Project Under \$5 million.

ESI has also recently opened a new office in the Village of Elizabeth (near Galena) at 202 East Myrtle Street. Tony

Malone is very busy setting up our new office to ensure that it has all the amenities of home. We hope you will stop in to see us at the new location soon.

Rumors say a fiery rivalry started on the Chicago Indoor Racing course during the February Leadership Retreat. Dan Feuerborn, Structural Manager / speed demon, won the day while 2nd place went to Joe Chiczewski. Dave Clark and Tony Malone tied for the 3rd place finishers. Jim Sullivan and Patty Gallagher also made strong showings as rookies to the team with promising racing careers yet to come. -ML



Featured Projects...

ESI Consultants, Ltd. has been providing municipal street maintenance, design and construction services to our municipal clients around the State of Illinois. In this article we are highlighting three of those projects; with the **Village of Long Grove**, the **City of Chicago**, and the **City of Champaign**.



Village of Long Grove – For the past several years we have been providing Village Engineering Services for Long Grove which included administering the annual street maintenance program. We initiated a street rating program in order to prioritize improvements and develop a ten year maintenance program. A modified rating system was established with biannual rating updates. This improved the efficiency of the program and also provided for improved communications.

The first goal was to set a baseline by rating and ranking each street. ESI performed the rating of all public streets in the Village. Factors such as longitudinal and transverse cracking, edge failure, shoulder rutting and previous patching were factors that were taken into account in the rating. The next step used a formula that took into account all of these factors and translated them into an overall street rating ranging from 1 to 5. These ratings were then broken down into a 10 year street program that could be accomplished with the Village's available MFT funding levels.

Proximity of the streets also became a big part of determining when a street would be scheduled for rehabilitation. By grouping streets in the same general location, it makes it easier for contractors to relocate

their equipment, receive truck deliveries to the same general area, and minimize the area of the Village that would be disrupted by construction.



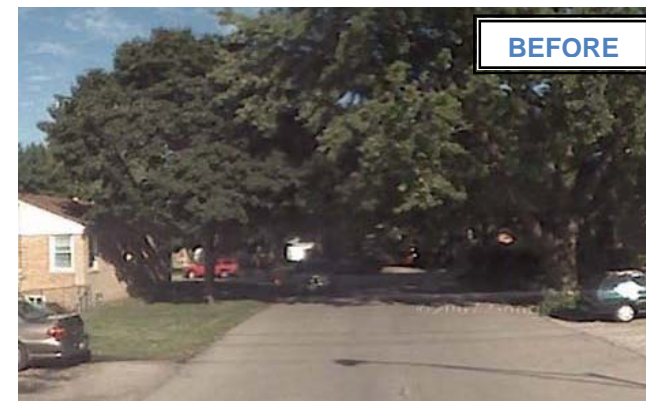
Preventive maintenance techniques have also been incorporated into the annual street program which has allowed streets in "good" condition to remain at that level for a longer period of time. This also allows the available funds to be stretched further and improve a larger number of miles each year.

These rating and ranking planning tools allowed a comprehensive annual improvement program to be developed that improves each and every street in the Village of Long Grove over a 10 year period. The comprehensive improvement program coupled with the use of preventive maintenance and rehabilitation techniques has allowed the Village to reduce disruption to the community, more effectively use their available funds, and provide a higher level of service and quality roadways for the community. -BW

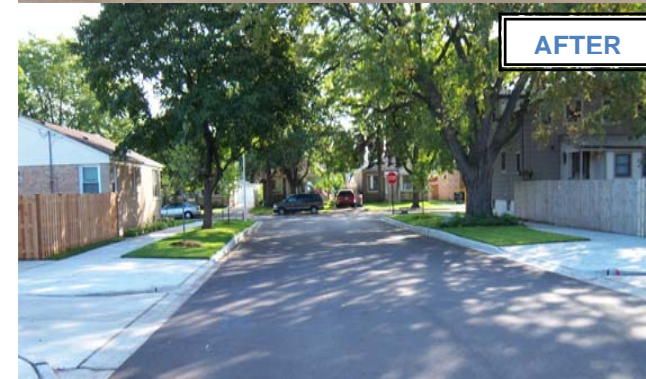
City of Chicago – In 2006, ESI Consultants, Ltd. began providing design engineering services for the City of Chicago's Work Projects Administration (WPA) and in 2007 entered into a multi-year agreement to provide construction engineering services for the same program all across the City. The Work Projects Administration (WPA) program was first introduced by Franklin Delano Roosevelt as part of the New Deal in 1935. This program provided employment during the Depression to millions of people throughout the United States until 1943.

The majority of the projects funded by the WPA were highway and street projects,

Municipal Street Programs



BEFORE



AFTER

however, bridges, public buildings and the installation of utilities were also part of the WPA.

Currently, there still remain many miles of residential streets in the City of Chicago that were built under the WPA program. The Chicago Department of Transportation (CDOT) currently has a program in place to reconstruct the WPA streets throughout the City. Most of these streets were not constructed to today's standards. Although these streets were resurfaced several times, they have deteriorated over time. In addition to being in poor condition, these streets typically lack curb and gutter with adequate sewer structures to allow for proper runoff and drainage. After heavy rainfall, these WPA streets leave standing water, contributing to flooding, and in some cases even resulting in basement flooding.

ESI provided design services to CDOT for the North Area 5 Contract consisting of approximately one mile of residential streets in the 41st Aldermanic Ward.

ESI is currently in the midst of a multi-year construction engineering program for WPA streets with projects that range in length from one block up to a mile or more. Each project for design and construction typically consists of full street reconstruction

which includes; new concrete base course and bituminous overlay, curb and gutter, sidewalks, drainage structures, parkway restoration, including new trees and sod, ADA compliant ramps and new decorative street lighting. As part of the City's environmentally friendly approach, the program also includes permeable pavement to reduce storm water run-off. -MR / KS

City of Champaign – In the fall of 2008, ESI Consultants, Ltd. began a multi-year contract to provide the City of Champaign with planning, design and construction engineering services for their Annual Concrete Streets Reconstruction Program. These individual street projects can range from concrete patching to complete reconstruction types of projects. Reconstruction projects can include complete pavement replacement, curb and gutter, driveways, sidewalk, storm sewer and landscaping improvements.

In the first year of the contract ESI is providing one set of plans containing designs for two locations with concrete patching only (Devonshire Drive west of Neil and Windsor Road east of Neil), three locations of local neighborhood street rehabilitation (Newbury Road, Winston and Thornton Drives), one location for urban renewal (Eureka Street along Beardsley Park), one surface maintenance improvement (Curtis Road west of I-57) and a new storm sewer installation along Williamsburg Drive. The designs are now all complete and bids have been solicited. Work on the locations is scheduled to begin in May. -DC



Completed section of Eureka with current design section in the background.